

MANAIA WHAKAMAURUTANGA

Appendix II – Maps & Geographics





Manaia Whakamaurutanga

Appendix II – Maps & Geographics



By Joseph McEnteer
www.tewharau.com

First Edition: 5th of September 2023
Digital Version

Disclaimer

1. Any views expressed and conclusions drawn are those of the author.
2. This document serves to express a vision for a Cultural Sanctuary, built to preserve, develop, and share our Māori culture and heritage. This proposal will refer to the Waiwhau Land Blocks, located at the end of Goldfields Road, Manaia, Hauraki. It's important to note that **the Waiwhau Land Blocks offer a case study only**, to canvas and express the concept of building a Cultural Sanctuary, however the concept may be developed and applied to a similar land block in a different location.
3. Although all attempts have been made to convey accurate information, due to time constraints and the early-stage nature of this concept, it's possible there may be some mistakes within this document. Please consider that the core purpose of this document is to express a concept and vision for building a Cultural Sanctuary and not to provide a historical account or whakapapa of Manaia and tangata whenua; **this information is for general contextual reference only**.
4. As this project is developed, the intention is to refine and further research all necessary information accurately. Please feel free to report anything that you may feel is a mistake or needs clarification, and I welcome all kōrero, support and contributions to help refine this concept.
5. If you feel there has been a mistake made at any point in this document, or that there is something that requires clarification, please send an email to the details below, and it will be investigated as soon as possible.

For all enquires please contact: culturalhub@tewharau.com
www.tewharau.com

Copyright © 2023, Joseph Te Wharau Moore McEnteer. All Rights Reserved. This concept document, and all intellectual property, ideas, concepts, designs, drawings, photos, images, and all other material or media, contained within this document are the intellectual property of the author (unless otherwise referenced) and protected under New Zealand Copyright Laws. All reproduction without written permission by the author is prohibited.



Contents

Maps & Geographic Visuals	4
Regional Context	4
Waiwhau land blocks property map	5
Manaia Whenua Context	6
Alienation of Hauraki Tribal Estate.....	9
From 1875	11
To 1997.....	12



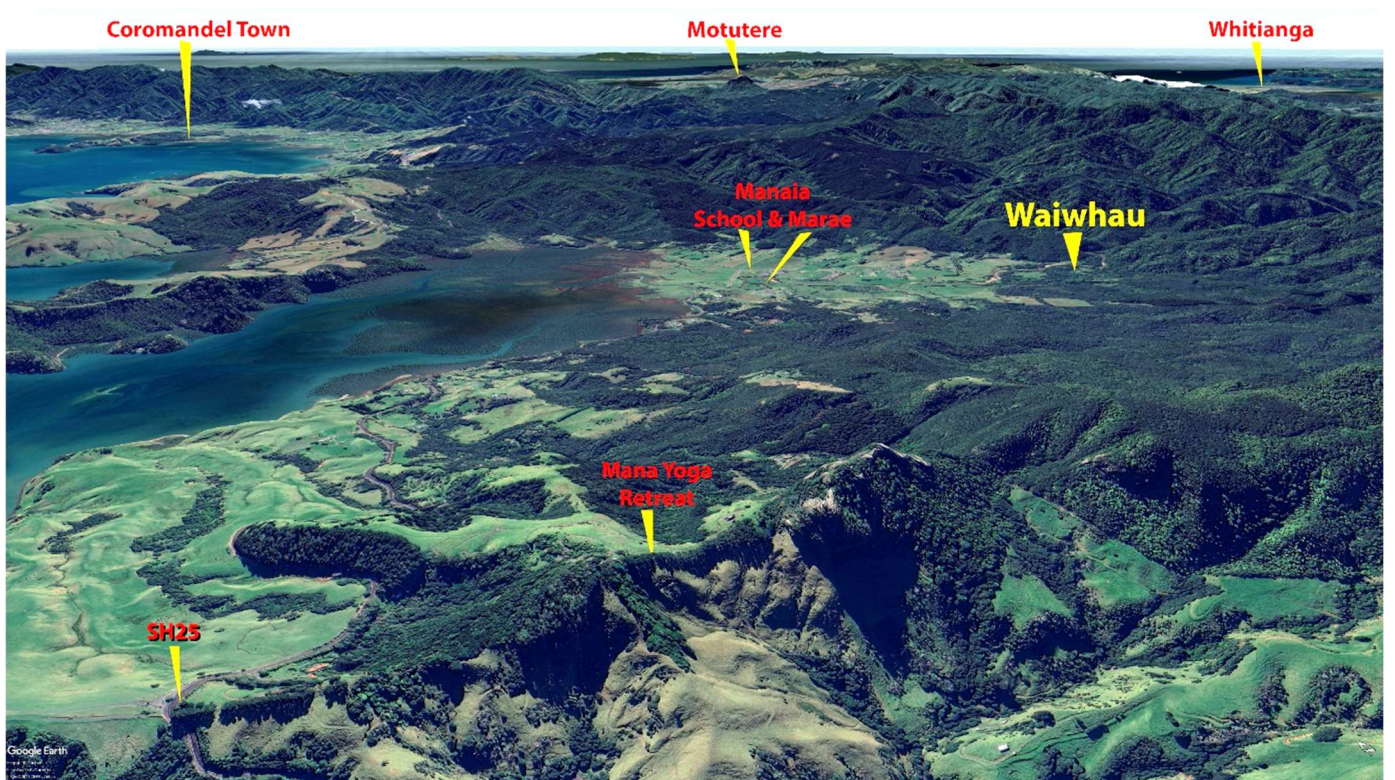


Maps & Geographic Visuals

Regional Context



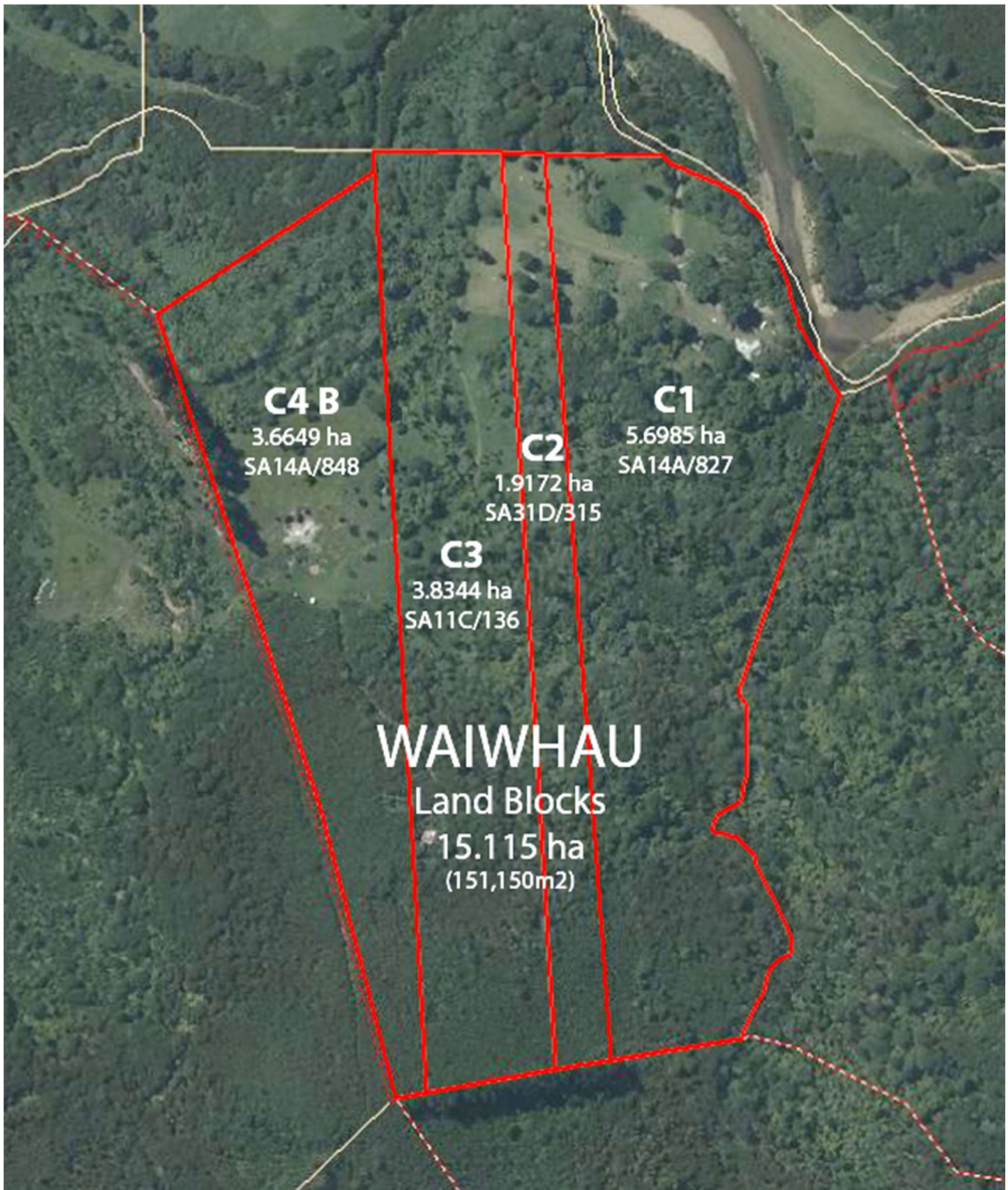
The location of Manaia in the context of key settlements in the region.



A view looking North over Manaia.



Waiwhau land blocks property map

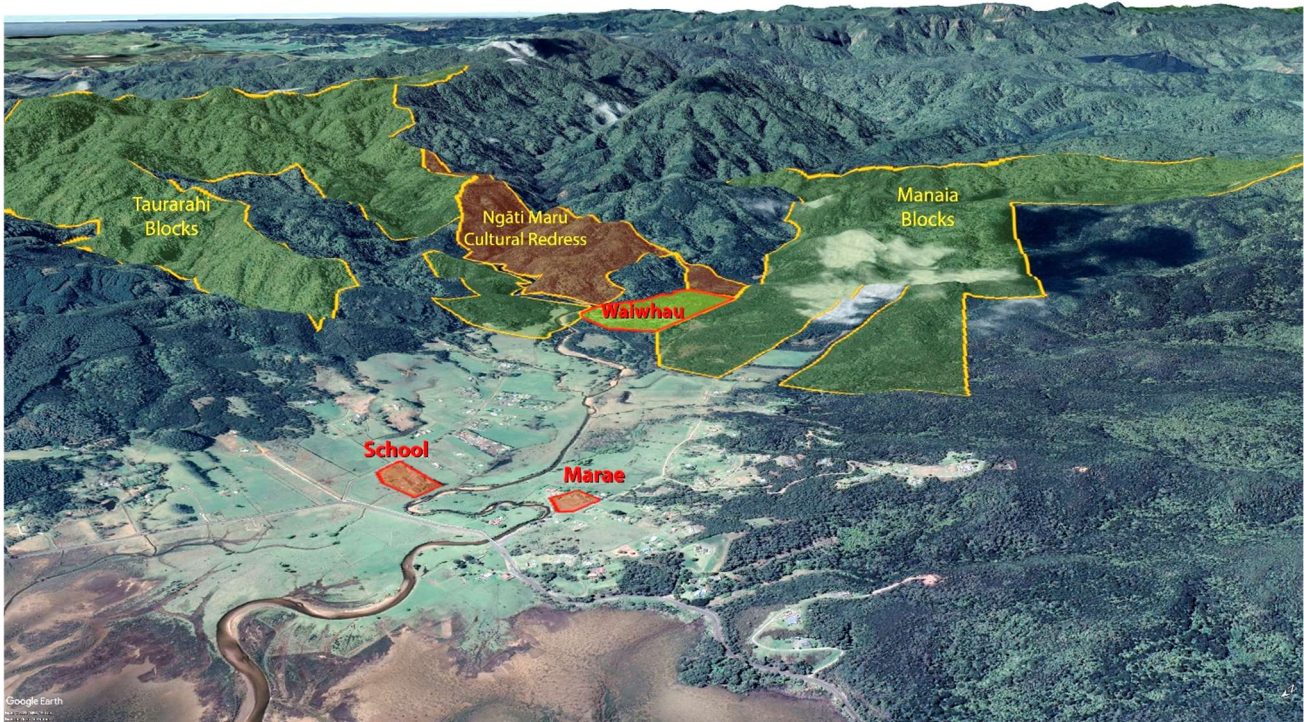


Map of the Waiwhau land blocks (15.115 ha over 4 titles)

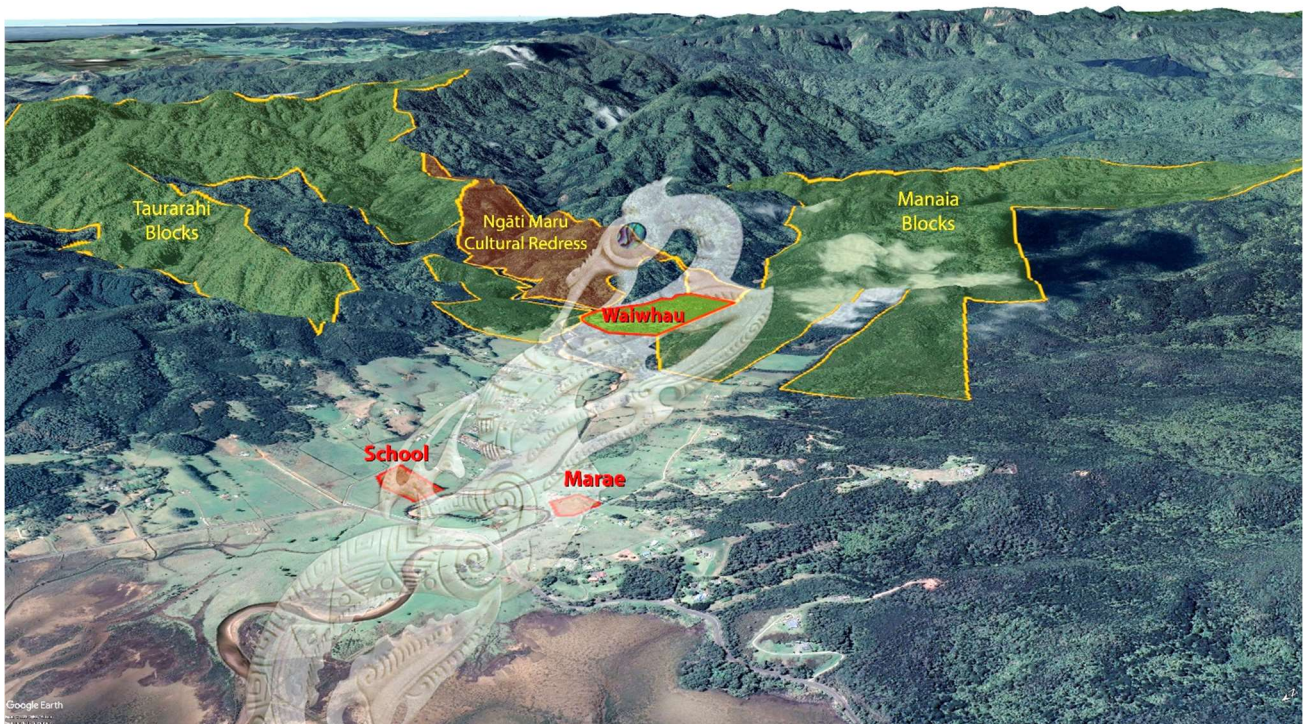
<i>Waiwhau C1 Block:</i>	<i>SA14A/827</i>	<i>5.6985 ha</i>
<i>Waiwhau C2 Block:</i>	<i>SA31D/315</i>	<i>1.9172 ha</i>
<i>Waiwhau C3 Block:</i>	<i>SA11C/136</i>	<i>3.8344 ha</i>
<i>Waiwhau C4 B Block:</i>	<i>SA14A/848</i>	<i>3.6649 ha</i>



Manaia Whenua Context

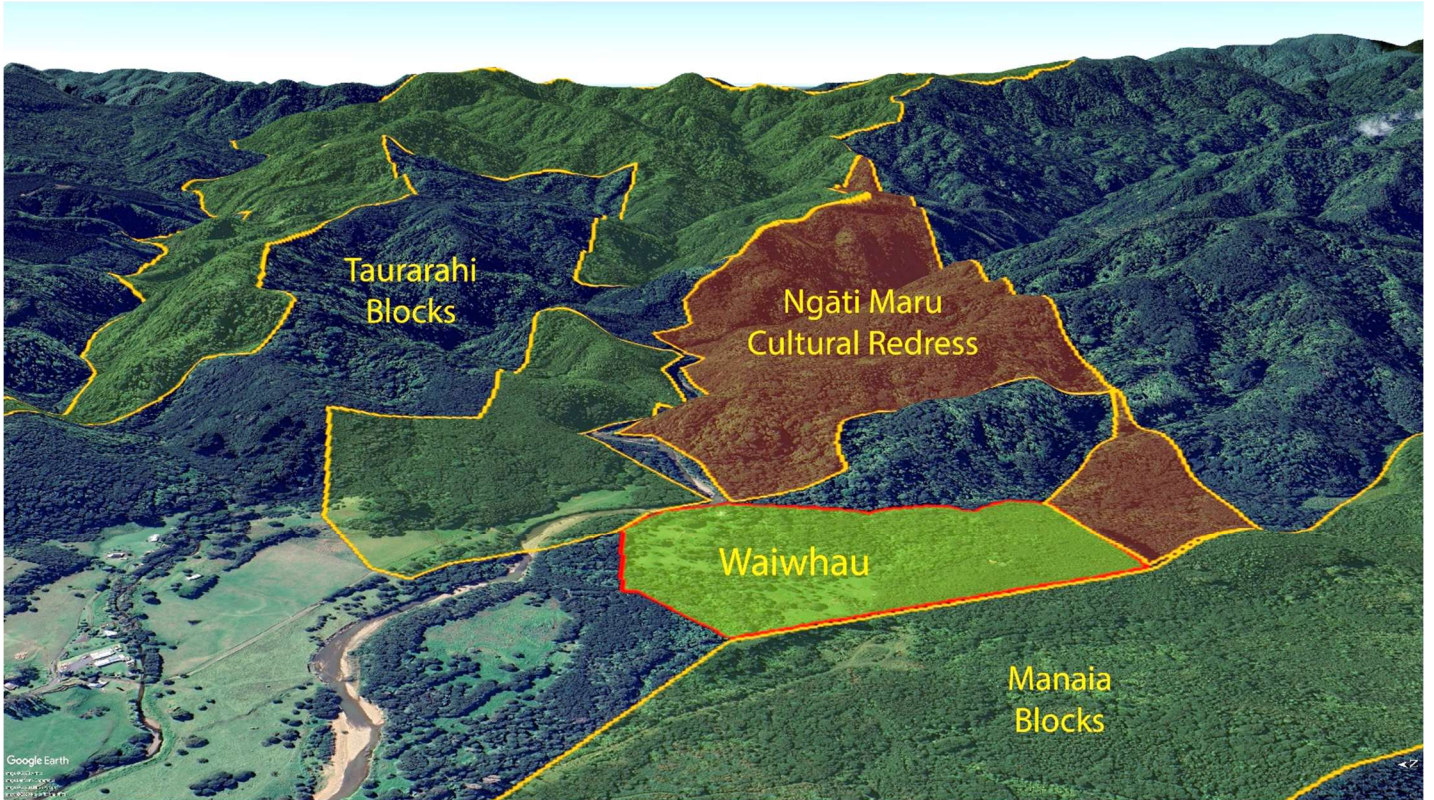


Geographical context of Waiwhau in relation to key geographic elements.

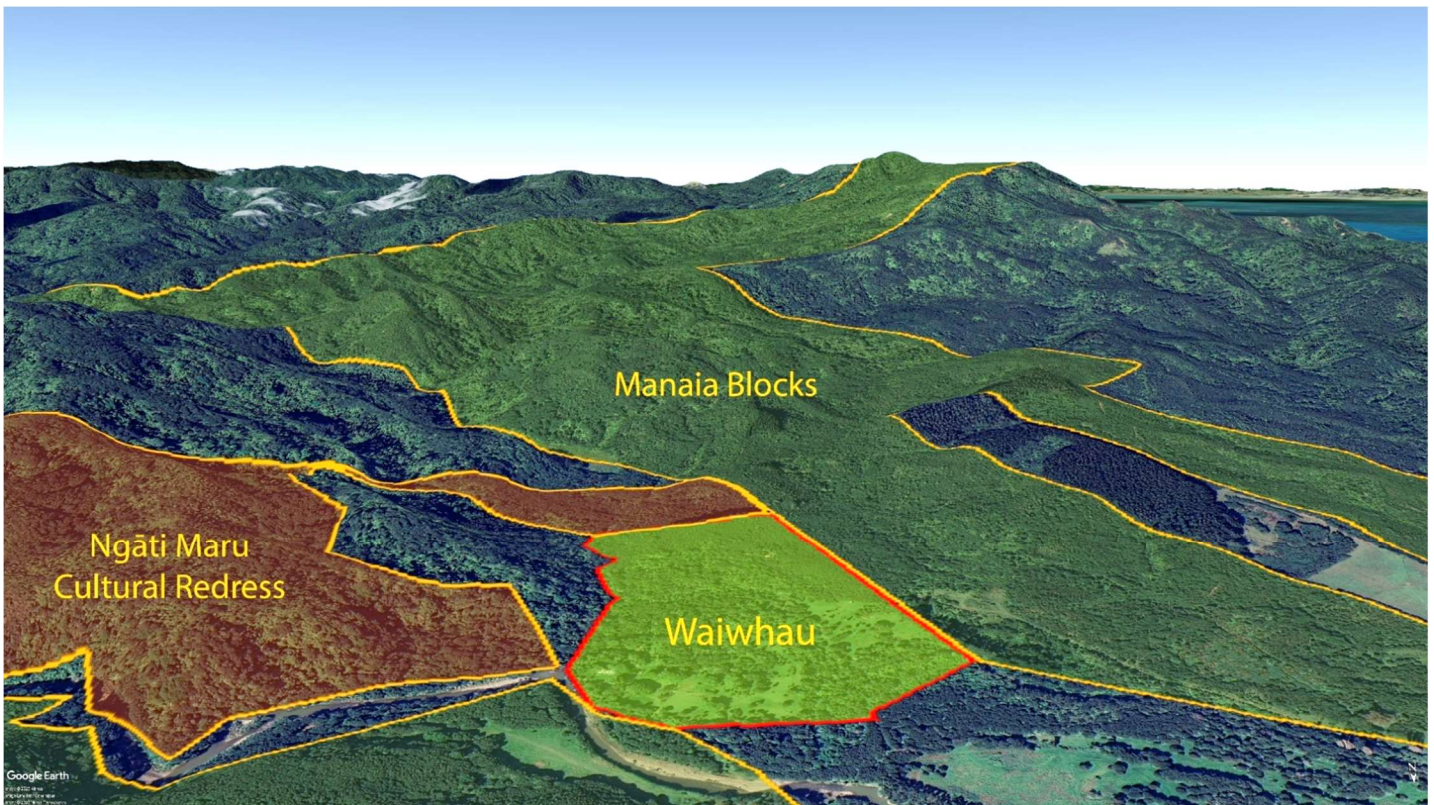


This image shows a Manaia guardian spirit sleeping in the valley, with the head of bird atop the Maunga leading to the sky, the tail of a fish in Tikapa Moana, and the body of a human embracing the Tangata Whenua. The Taurarahi and Manaia whenua together with the Ngati Maru Cultural Redress whenua form its korowai. It supports the Marae upon its back, and nurtures the school close to its belly, its body follows the river, and the Waiwhau whenua, sits right at its heart.

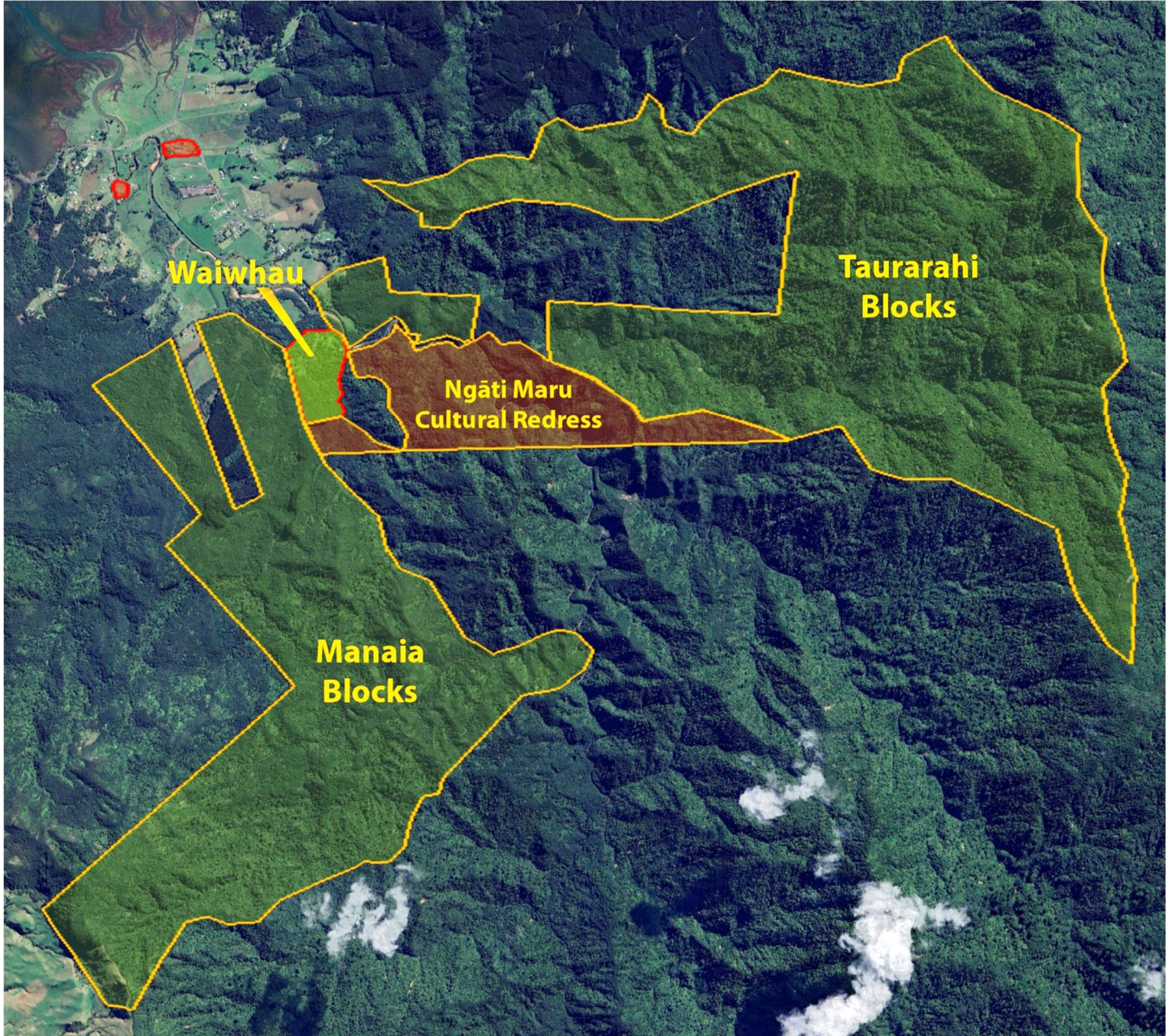
Note: *This is a conceptual narrative proposed by J. McEnteer.*



A view East over the Waiwhau blocks (centre), the Manaia land blocks (foreground, right), the Taurarahi blocks (background, left), and the Ngāti Maru Cultural Redress (background, right), making up the Korowai of Tupuna Whenua.



A view South over the Waiwhau blocks (centre), the Ngāti Maru Cultural Redress (foreground, left), the Manaia blocks (background, right), making up the Korowai of Tupuna Whenua.



Map showing the location of Waiwhau blocks in relation to the Manaia blocks (Māori land title), the Taurarahi blocks (Māori land title), the Ngāti Maru Cultural Redress blocks (centre, shaded in red), and the School and Marae (top left, shaded in red).



Alienation of Hauraki Tribal Estate

The proportion of alienated land and Maori land in the period 1840-1997 is shown in the table below.

TABLE 1: ALIENATED LAND AND MAORI LAND 1840-1997

	1840 %	1865 %	1875 %	1885 %	1890 %	1906 %	1912 %	1939 %	1997 %
Maori-owned land	87	74	49	28	23	14	12	6	2.6
Alienated land	6	19	44	65	70	79	81	94	97.4
Not researched	7	7	7	7	7	7	7	0 ⁵	0 ⁶

The pattern of Maori land alienation depicted in the time sequence maps has been derived from a computerised mapping database especially developed for this project. This database was developed using the research into the block histories which are contained in Volume 8 Parts 1-4. In addition other published sources provided supplementary information on old land claims and land affected by confiscation. The Ministry of Maori Affairs provided data on the existing Maori customary and freehold land in 1997.

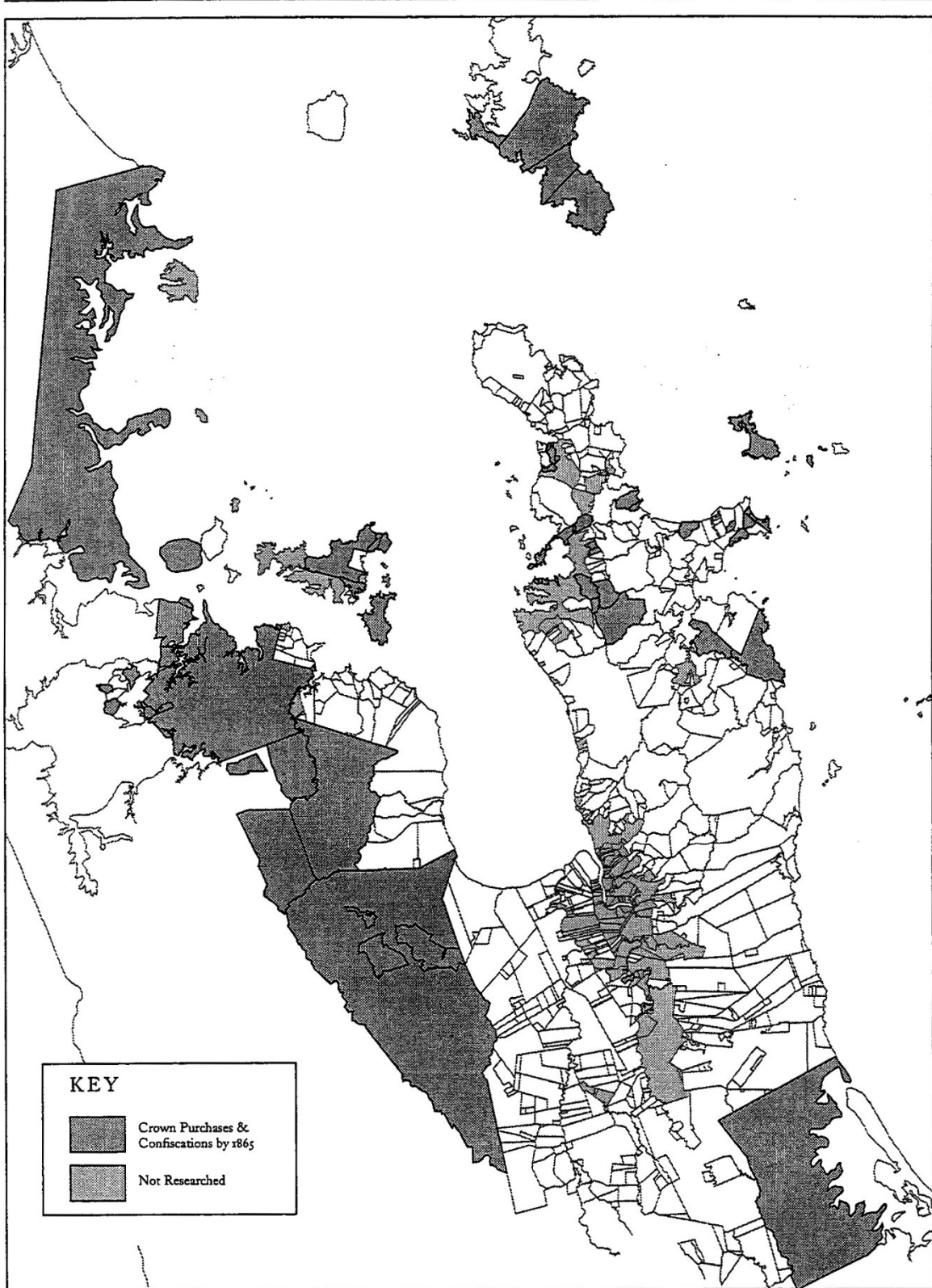
The mapping database enables a wide range of information to be depicted for any period and modern information can be shown as layers on top of the historical base. Accompanying the research reports are large multi-coloured wall charts showing the alienation of Maori land from 1840. All the small land block maps used in Volume 8 Parts 1-4 are derived from this mapping database.

This extract shows the progressive alienation of Hauraki Māori Land over 157 years (1840-1997)

~ *The Claims, Vol-1, Hauraki Māori Trust Board, 1997, Map 2, p.9*



**MAP 2: ALIENATION OF MAORI LAND BY CROWN PURCHASES AND CONFISCATIONS
AT 1865**



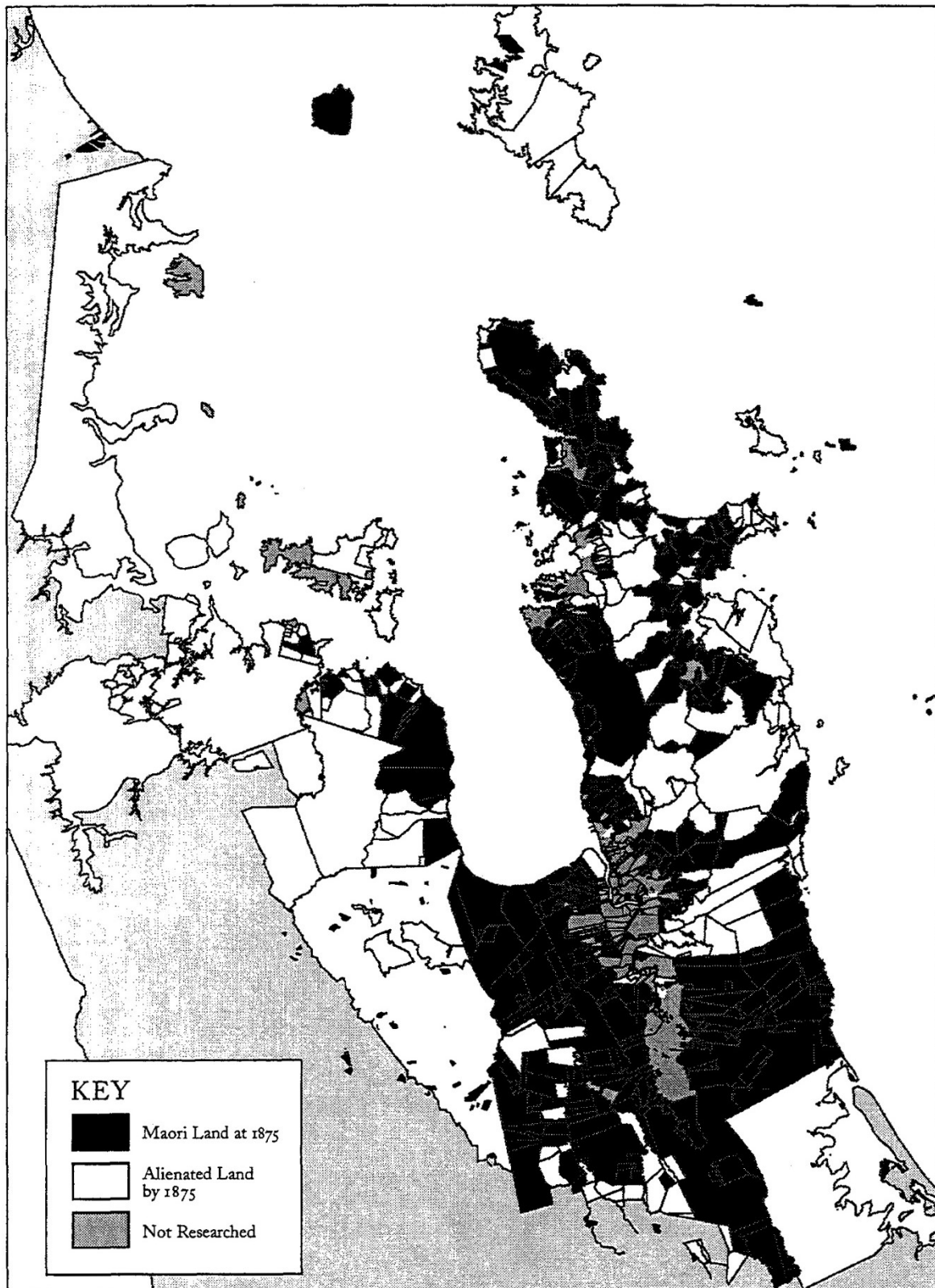
By 1865, The Crown had alienated 19% of Māori Land.

~ *The Claims, Vol-1, Hauraki Māori Trust Board, 1997, Map 2, p.9*



From 1875

MAP 3: ALIENATION OF MAORI LAND AT 1875



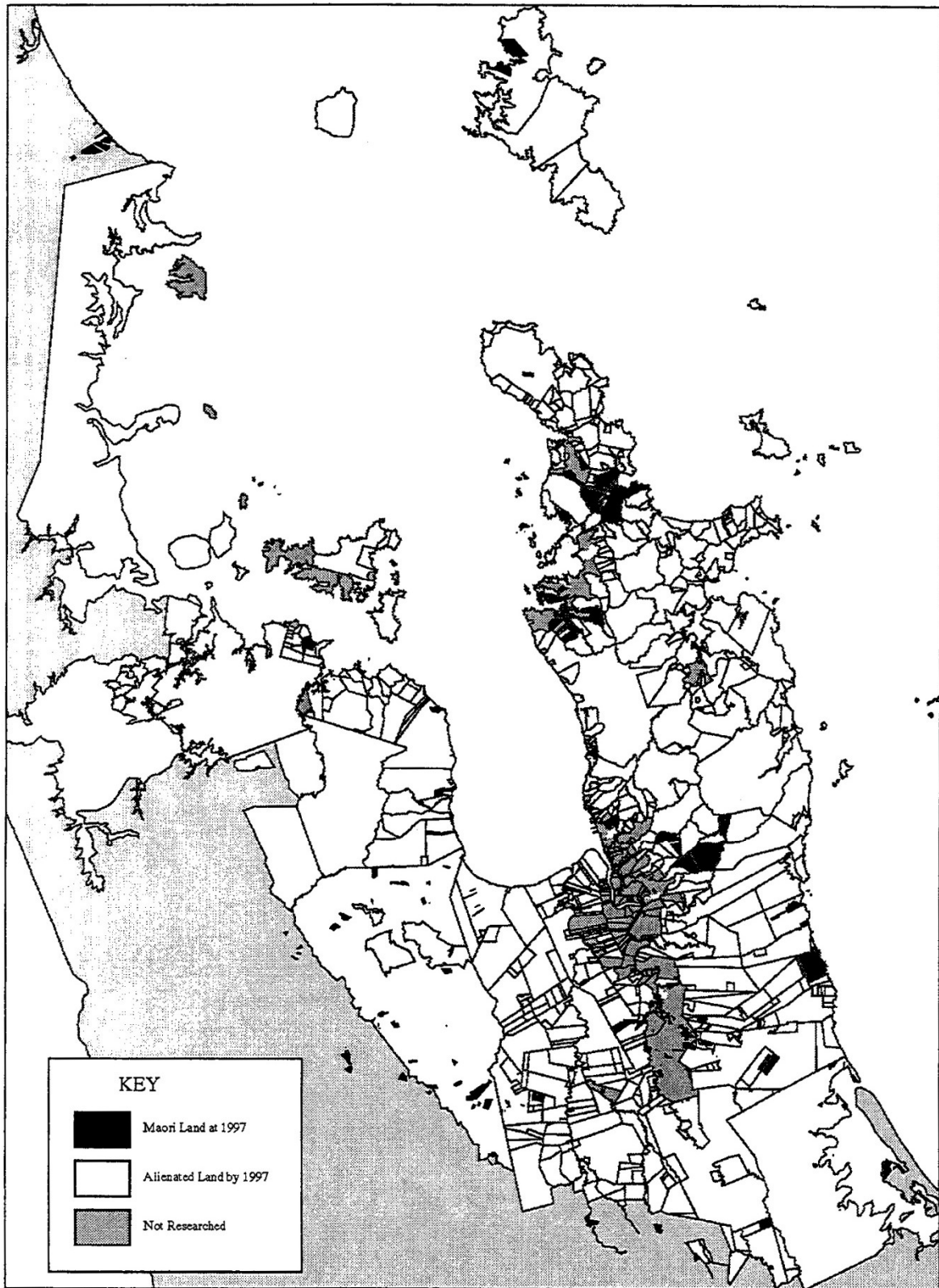
By 1875, 44% of Māori Land was alienated leaving only 49% of the original tribal land estate.

~ The Claims, Vol-1, Hauraki Māori Trust Board, 1997, Map 3, p.10



To 1997

MAP 9: MAORI LAND AT 1997



By 1997, only 2.6% of Māori Land remained.

~ The Claims, Vol-1, Hauraki Māori Trust Board, 1997, Map 9, p.16